



Rising Hinges

Opening system for swing gates with inclined leaves

Rising Hinges

PATENT
PENDING





New RISING HINGES system
for environments with slope

 **COMUNELLO****GATE**

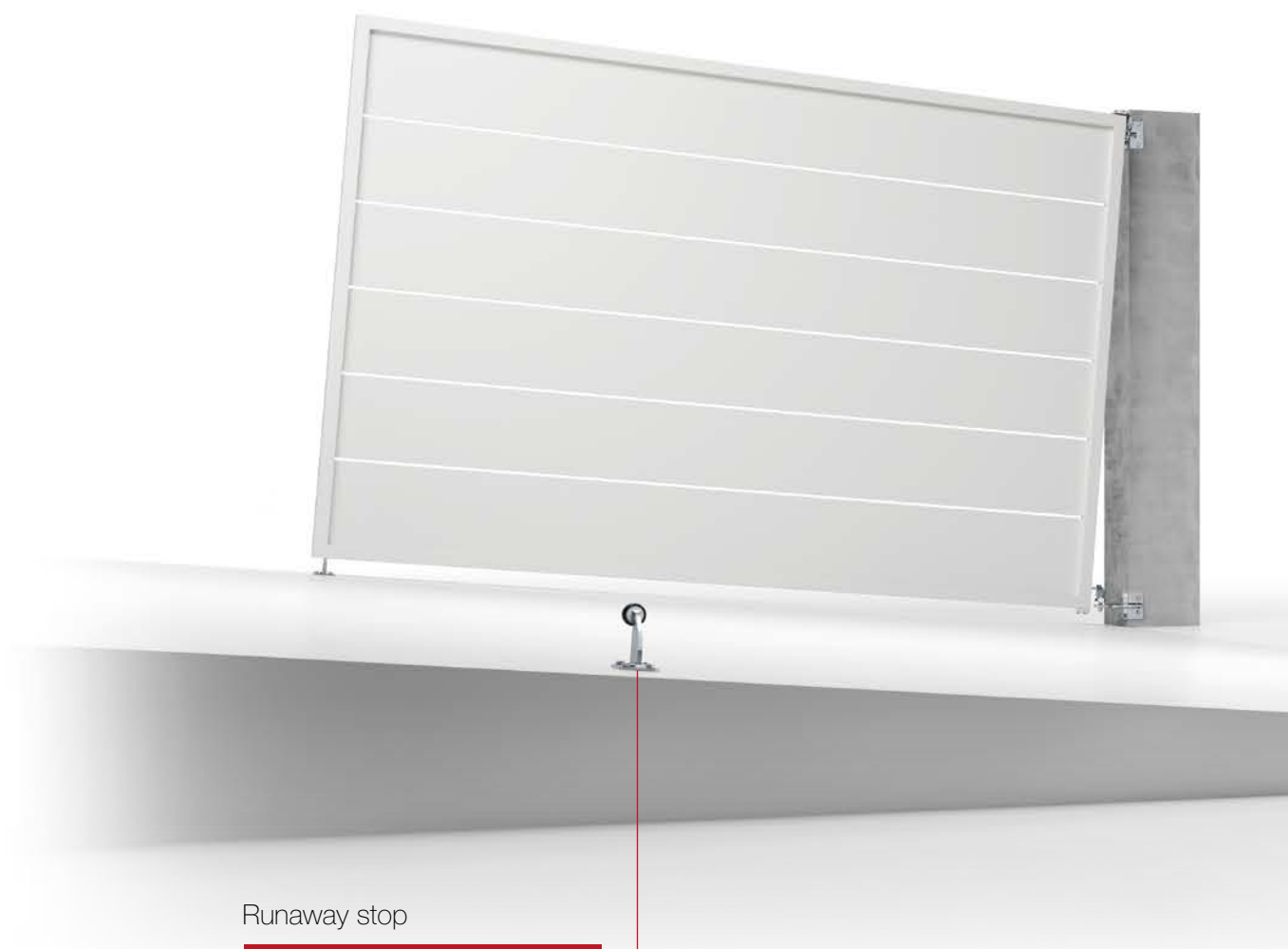


The Rising Hinges opening system

PATENT
PENDING



- *Opening system with inclined doors for sloping passages*
- *Adjustable leaf inclination*
- *For steel or aluminum leaves up to 3 meters*
- *Maximum slope up to 10 ° (~20%)*
- *To be welded or to be fixed versions available*



Runaway stop



- ART.
- 201
- 202
- 202F-A
- 202F-C

RISING HINGES is an innovative hinge system designed and developed for gates with sloping openings. Thanks to suitably designed levers, the hinges allow an inclined

opening of the door. The alignment of the rotation axes of the upper and lower hinges is guaranteed by the ball joints complete with greasers for constant lubrication.



Stops



ART.

166

169

170

170i

171

Rising Hinges Kit



ART.

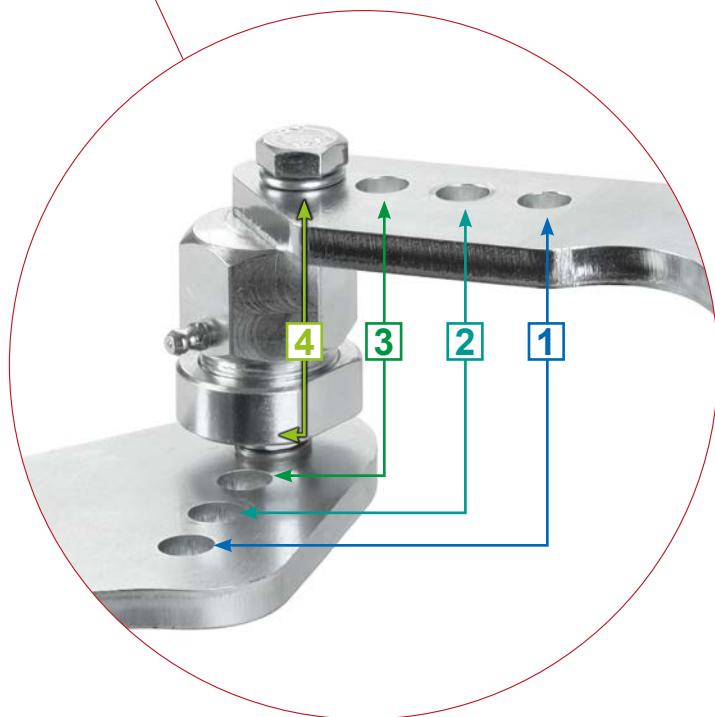
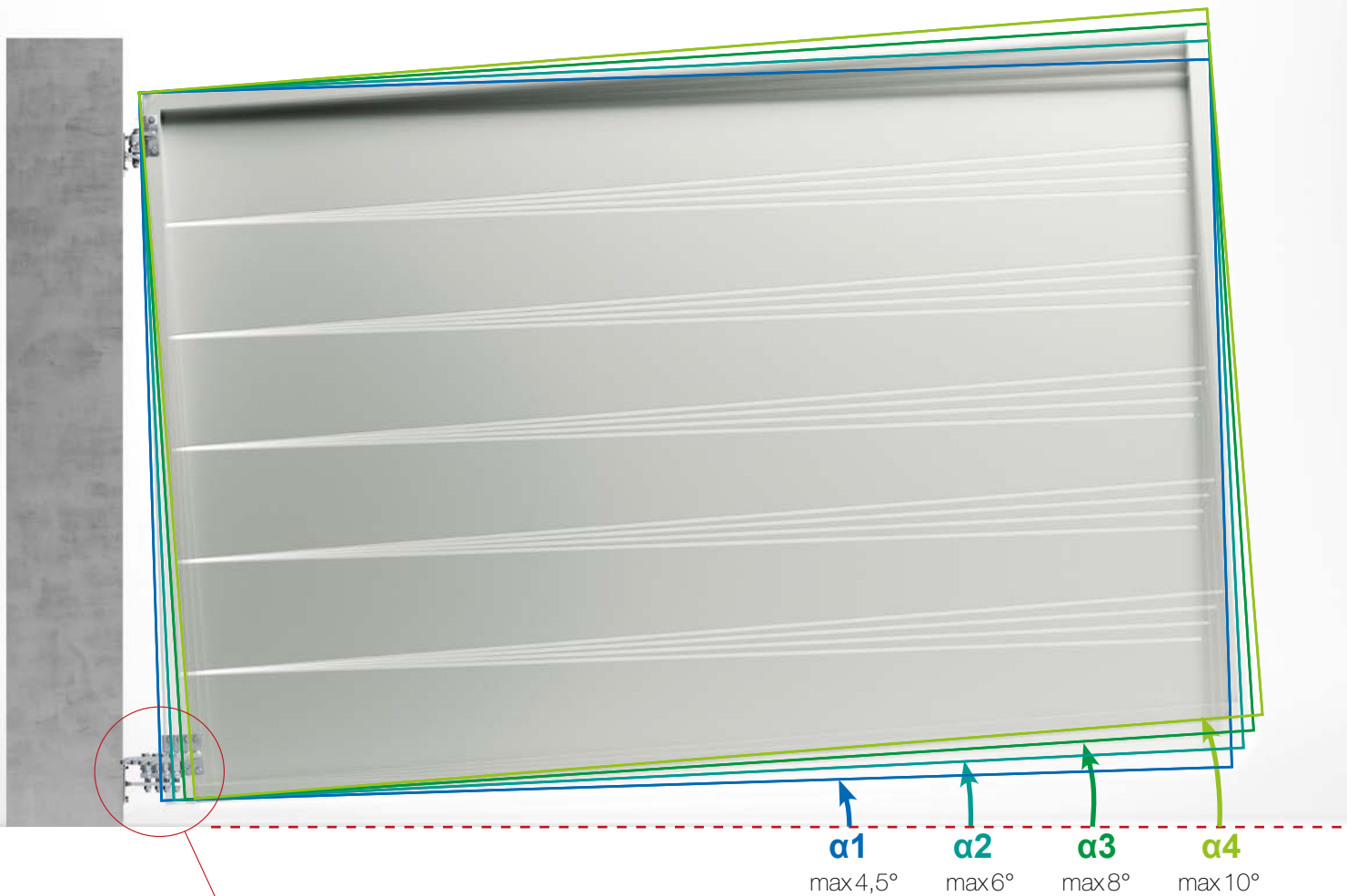
RS-ST

RS-AL

RS-100F



Rising hinges to be fixed

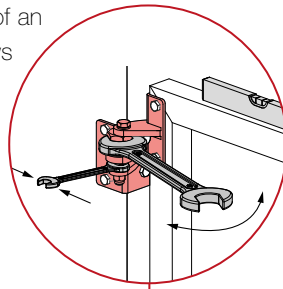


The lower hinge has an adjustment system consisting of 4 holes both in the bracket fixed to the gate and in the bracket fixed to the pillar. Each pair of holes (1, 2, 3, 4) corresponds to an inclination of the door.

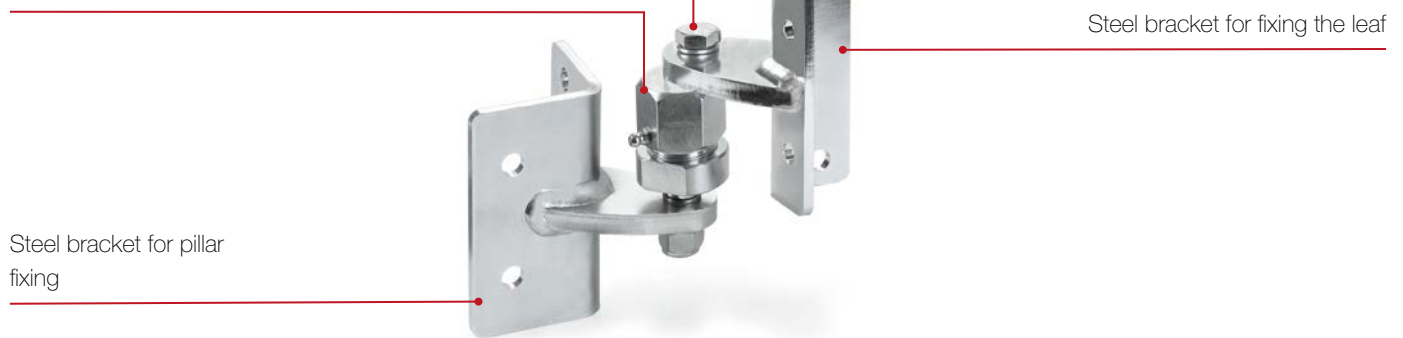
By adjusting the distance between the two hinges and adjusting the lower hinge, the desired inclination can be obtained.

Upper Rising hinge to be fixed

The leaf bracket is connected to the joint by means of an off-axis eccentric screw; the rotation of the joint allows a fine adjustment of the door, useful for placing it in a horizontal position and aligning it with the pillar.

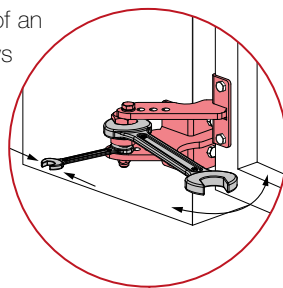


The ball joint with grease nipple allows the door to tilt during movement



Lower Rising hinge to be fixed

The leaf bracket is connected to the joint by means of an off-axis eccentric screw; the rotation of the joint allows a fine adjustment of the door, useful for placing it in a horizontal position and aligning it with the pillar.



The ball joint with grease nipple allows the door to tilt during movement



Both brackets have 4 holes; each hole corresponds to a different inclination of the leaf in the open position.

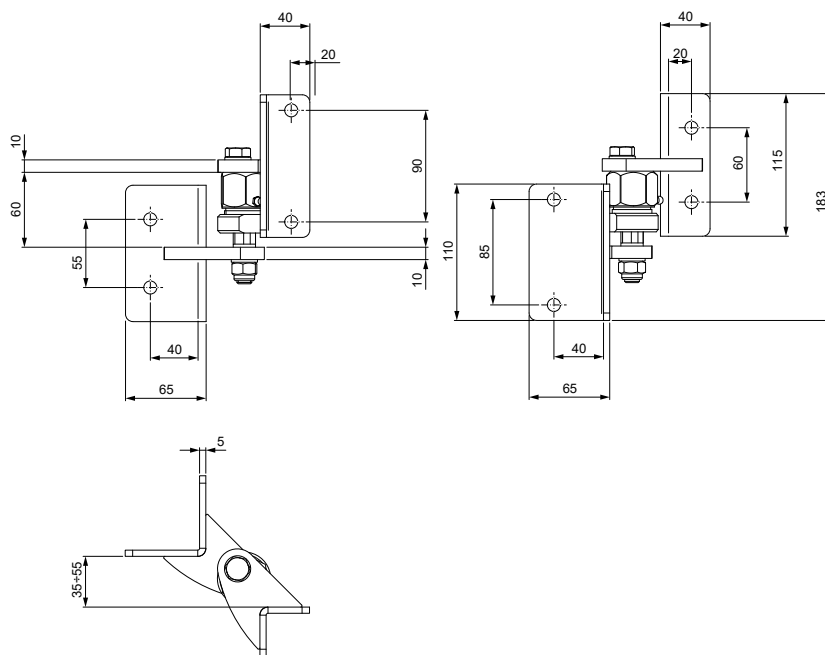
Kit elements

RS-100F

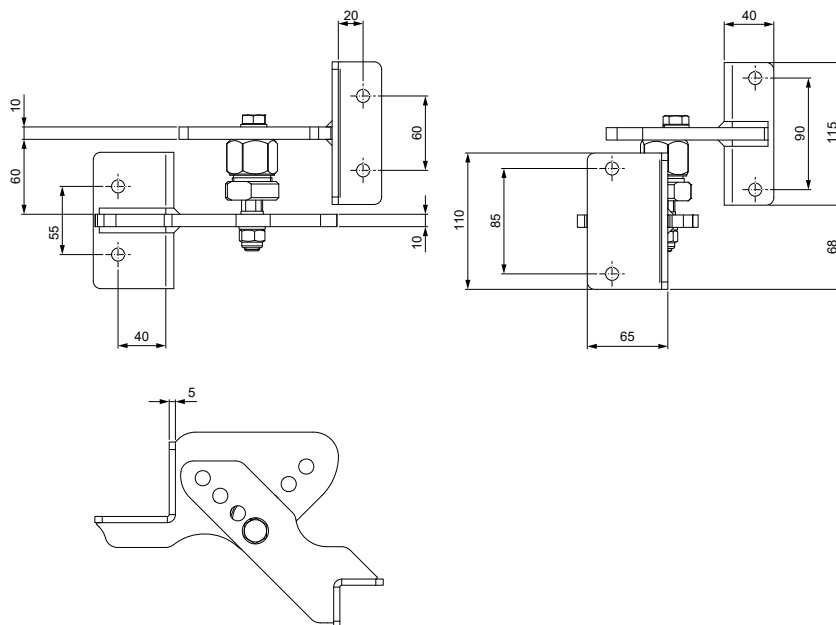
Opening system for swing gates with inclined leaves. To fix on the door and to fix on the pillar
 Système d'ouverture pour portails battants à vantaux inclinés. A fixer sur la porte et à fixer sur le pilier
 Öffnungssystem für Drehtore mit schrägen Flügeln. Zur Befestigung an der Tür und zur Befestigung an der Säule
 Sistema de apertura para cancelas batientes con hojas inclinadas. Fijar en la puerta y fijar en el pilar
 Система открывания для распашных ворот с наклонной створкой. Закрепить на двери и закрепить на стойке.

CODE	ART.	SIZE	Max leaf weight Kg	Pcs per pack	Box info	
					Kg	
10826000 001	RS-100F	one size	150	1 kit	4,6	

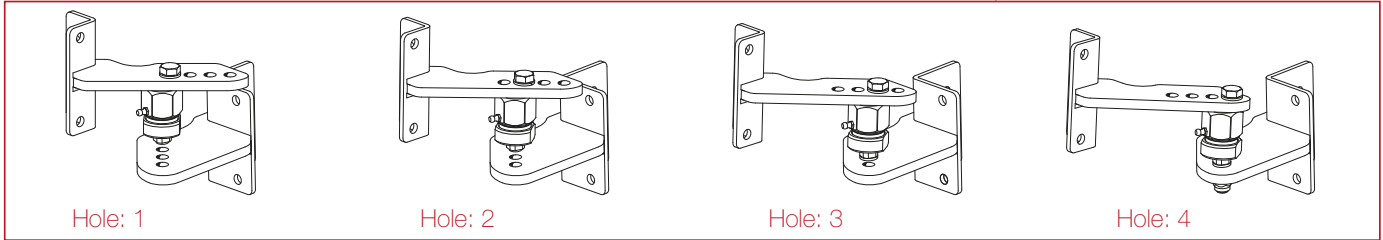
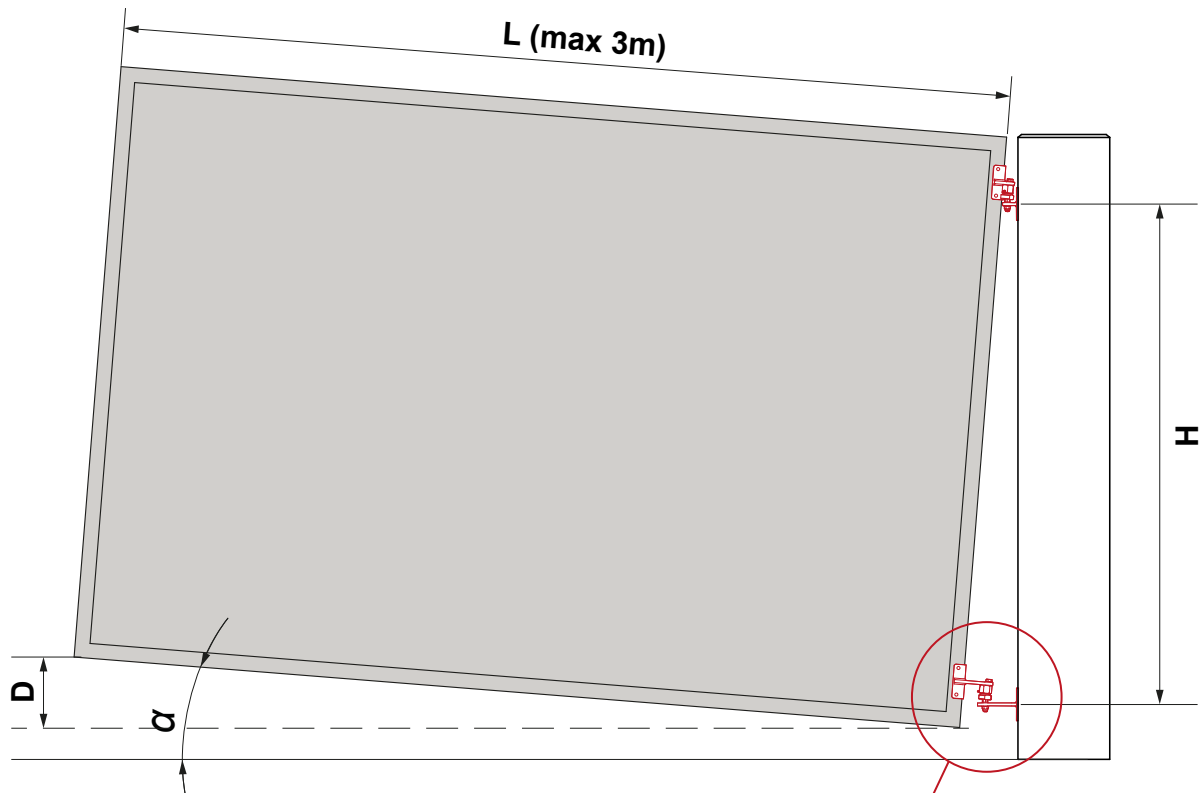
Upper Rising hinge



Lower Rising hinge

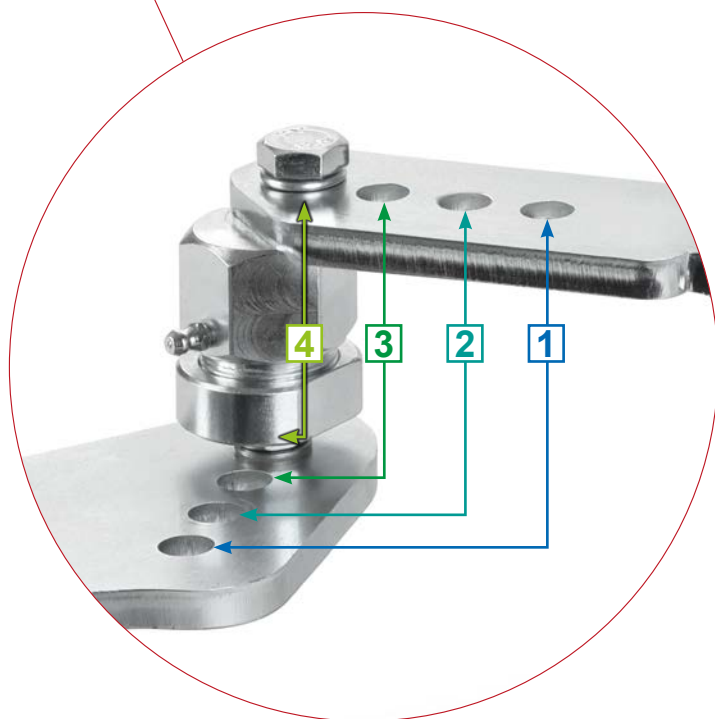
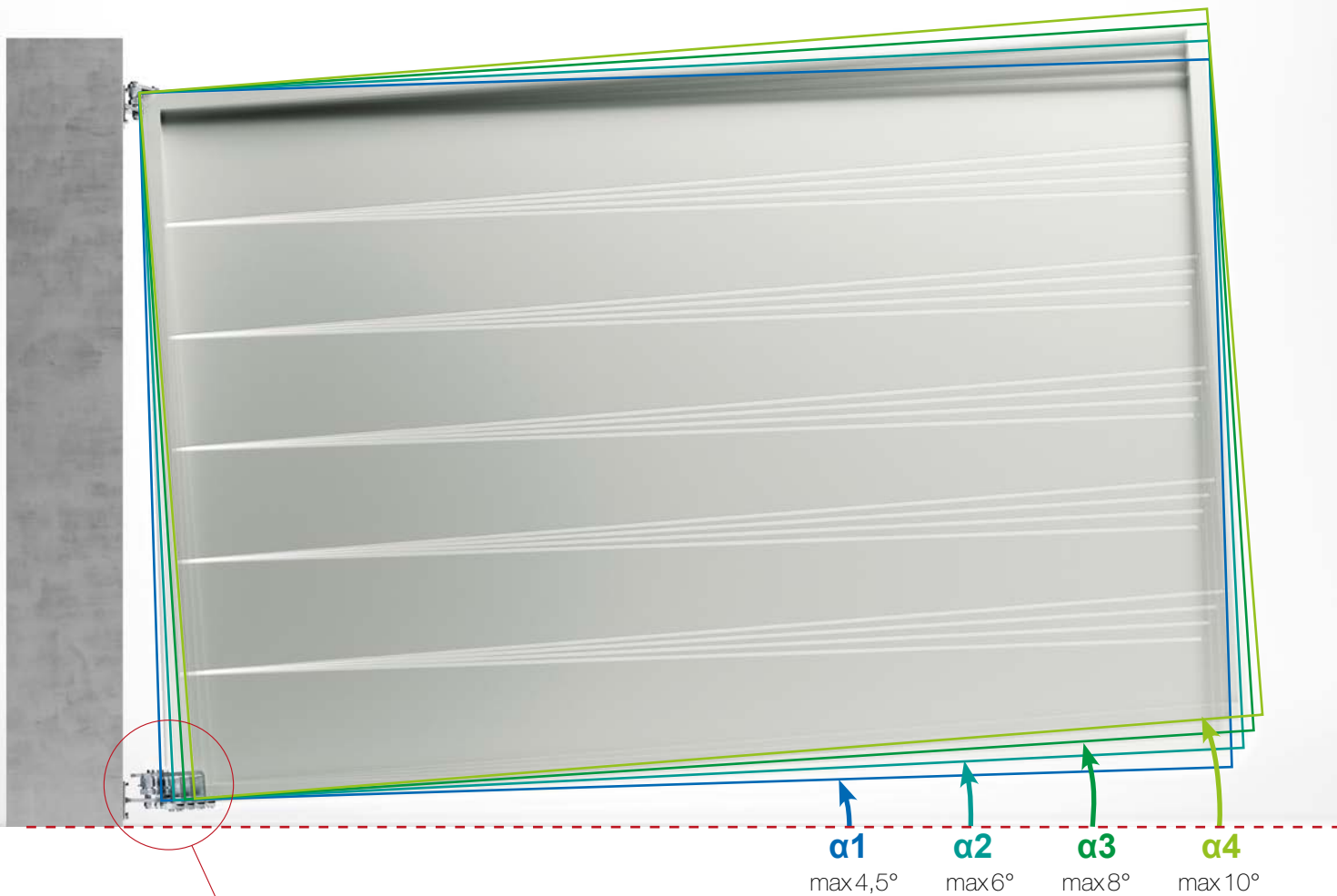


Lower hinge rise set up



H m	Hole	α°	D mm (L=1 m)	D mm (L=2 m)	D mm (L=3 m)
0,8	1	4,5	80	160	240
	2	6	103	206	309
	3	8	150	300	450
	4	10	180	360	540
1,2	1	3	50	100	150
	2	4,5	80	160	240
	3	5,5	100	200	300
	4	7	125	250	375
1,5	1	2,5	45	90	135
	2	3,5	60	120	180
	3	4,5	80	160	240
	4	5,5	100	200	300
1,8	1	2	35	70	105
	2	3	50	100	150
	3	3,5	60	120	180
	4	4,5	80	160	240

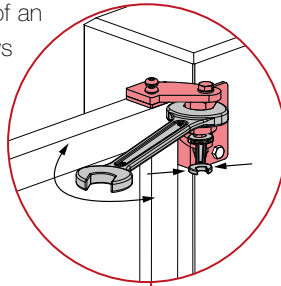
Rising hinges to be welded



The lower hinge has an adjustment system consisting of 4 holes both in the bracket welded to the gate and in the bracket welded to the pillar. Each pair of holes (1, 2, 3, 4) corresponds to an inclination of the door. By adjusting the distance between the two hinges and adjusting the lower hinge, the desired inclination can be obtained.

Upper Rising hinge to be welded

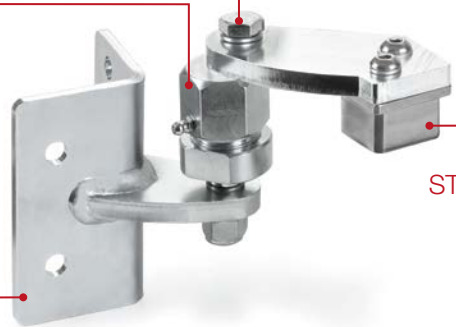
The leaf bracket is connected to the joint by means of an off-axis eccentric screw; the rotation of the joint allows a fine adjustment of the door, useful for placing it in a horizontal position and aligning it with the pillar.



The ball joint with grease nipple allows the door to tilt during movement

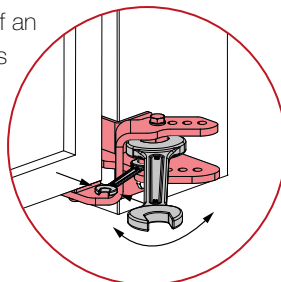
Leaf bracket with insert to be welded in steel and aluminum versions.

Steel bracket for pillar fixing



Lower Rising hinge to be welded

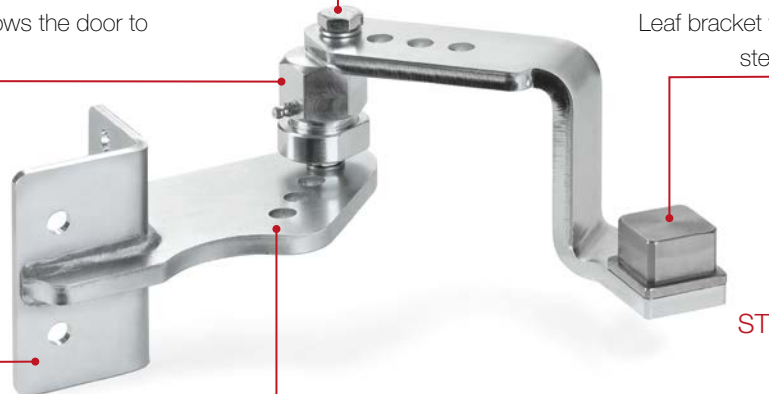
The leaf bracket is connected to the joint by means of an off-axis eccentric screw; the rotation of the joint allows a fine adjustment of the door, useful for placing it in a horizontal position and aligning it with the pillar.



The ball joint with grease nipple allows the door to tilt during movement

Leaf bracket with insert to be welded in steel and aluminum versions.

Steel bracket for pillar fixing



Both brackets have 4 holes; each hole corresponds to a different inclination of the leaf in the open position.

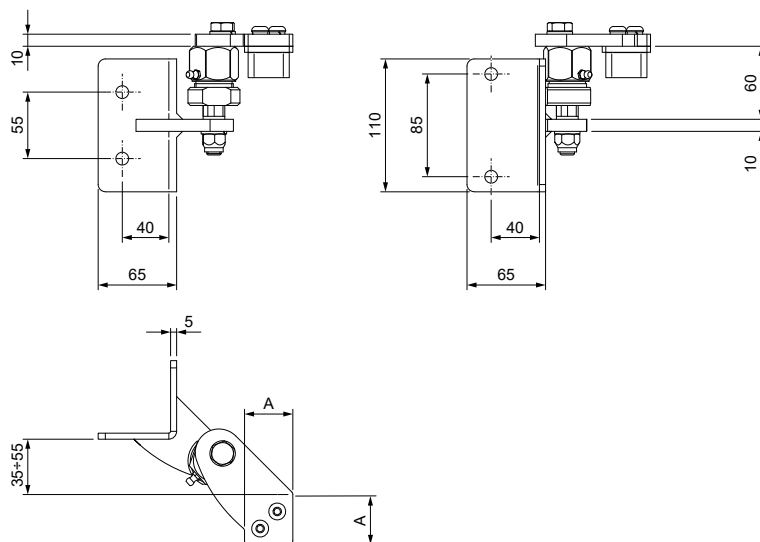
Kit elements

RS-ST / RS-AL

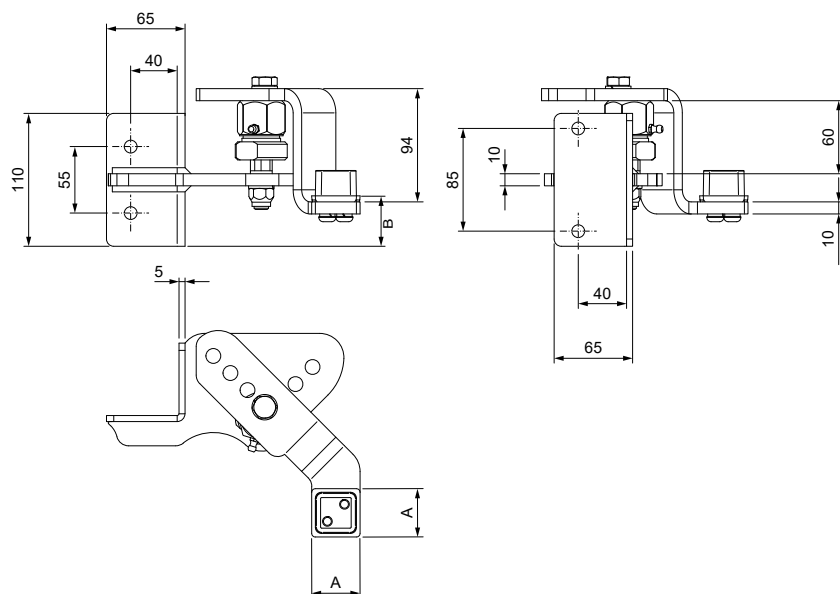
Opening system for swing gates with inclined leaves. To weld on the door and to fix on the pillar
 Système d'ouverture pour portails battants à vantaux inclinés. A souder sur la porte et à fixer sur le pilier
 Öffnungssystem für Drehtore mit schrägen Flügeln. Zur Schweißen an der Tür und zur Befestigung an der Säule
 Sistema de apertura para cancelas batientes con hojas inclinadas. Soldar en la puerta y fijar en el pilar
 Система открывания для распашных ворот с наклонной створкой. Приварить к двери и закрепить на стойке

CODE	ART.	Size	Insert material	A	B	C	D	E	Max leaf weight Kg	Box info	
										Pcs per pack	Kg
10826015 001	RS-ST140-LH	40x40	Steel	40	20	40	20	40	120	1 kit	5
10826020 001	RS-AL140-LH	40x40	Aluminium	40	20	40	20	40	120	1 kit	4.6
10826035 001	RS-ST150-LH	50x50	Steel	50	30	50	30	50	120	1 kit	5.8
10826040 001	RS-AL150-LH	50x50	Aluminium	50	30	50	30	50	120	1 kit	5.1
10826055 001	RS-ST165-LH	65x65	Steel	65	40	65	40	65	120	1 kit	7.5
10826060 001	RS-AL165-LH	65x65	Aluminium	65	40	65	40	65	120	1 kit	6
10826005 001	RS-ST140-RH	40x40	Steel	40	20	40	20	40	120	1 kit	5
10826010 001	RS-AL140-RH	40x40	Aluminium	40	20	40	20	40	120	1 kit	4.6
10826025 001	RS-ST150-RH	50x50	Steel	50	30	50	30	50	120	1 kit	5.8
10826030 001	RS-AL150-RH	50x50	Aluminium	50	30	50	30	50	120	1 kit	5.1
10826045 001	RS-ST165-RH	65x65	Steel	65	40	65	40	65	120	1 kit	7.5
10826050 001	RS-AL165-RH	65x65	Aluminium	65	40	65	40	65	120	1 kit	6

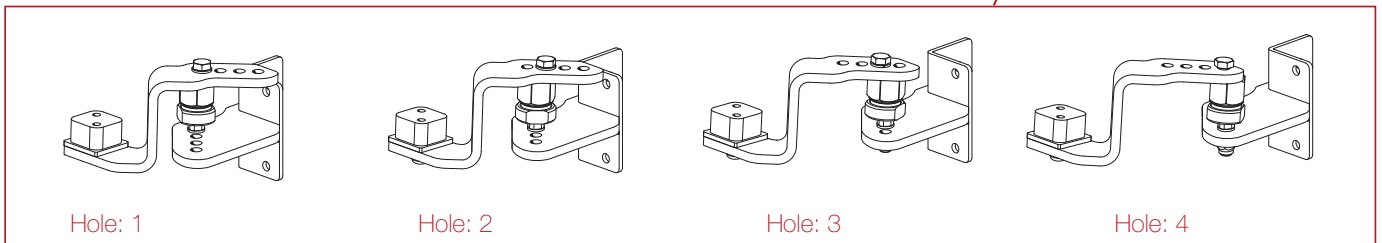
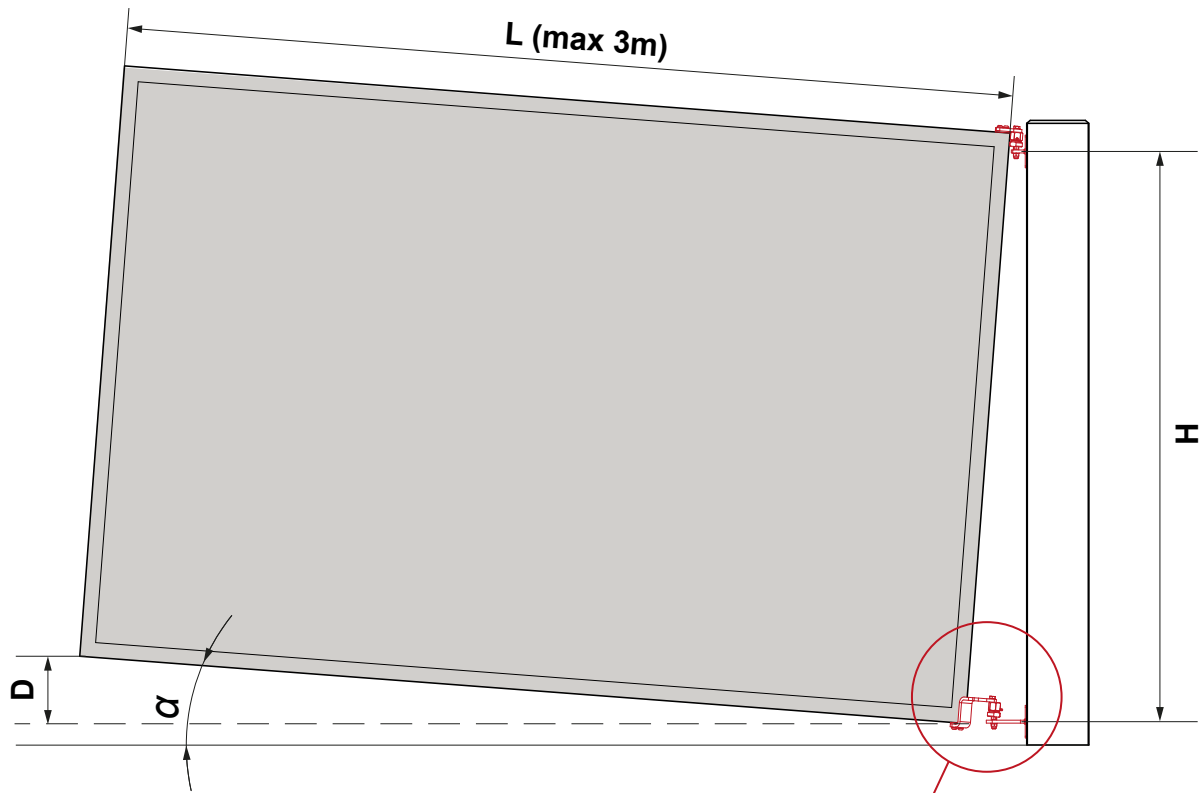
Upper Rising hinge



Lower Rising hinge



Lower hinge rise set up



H m	Hole Foro	α°	D mm (L=1 m)	D mm (L=2 m)	D mm (L=3 m)
0,8	1	4,5	80	160	240
	2	6	103	206	309
	3	8	150	300	450
	4	10	180	360	540
1,2	1	3	50	100	150
	2	4,5	80	160	240
	3	5,5	100	200	300
	4	7	125	250	375
1,5	1	2,5	45	90	135
	2	3,5	60	120	180
	3	4,5	80	160	240
	4	5,5	100	200	300
1,8	1	2	35	70	105
	2	3	50	100	150
	3	3,5	60	120	180
	4	4,5	80	160	240

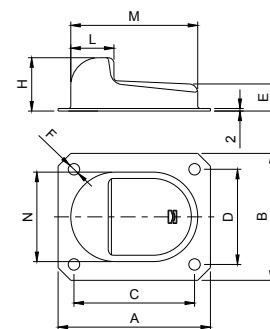
166

Stop batten to be fixed
Battent d'arrêt à fixer
Auflaufschuh zum Anschrauben
Tope para fijar
Прикрепляемый стопор



CODE	ART.	Size	A	B	C	D	E	F	H	L	M	N	Box info	
													Pcs per pack	Kg
10704601 001	166P	Piccolo	120	100	95	75	21	Ø9	42	34	100	70	25	6,80
10704602 001	166G	Grande	160	130	125	100	23	Ø11	48	40	130	90	10	4,77

Finishing: Galvanized



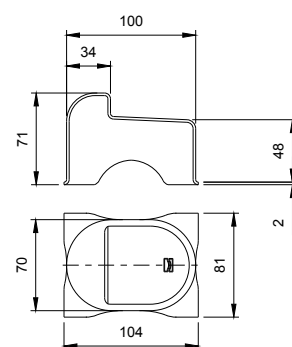
169

Ground central stop to be cemented
Butée centrale au sol à sceller
Auflaufschuh zum Ausbetonieren
Tope para cementar
Цементируемый стопор



CODE	ART.	Box info	
		Pcs per pack	Kg
10700905 001	169	25	7,9

Finishing: Galvanized

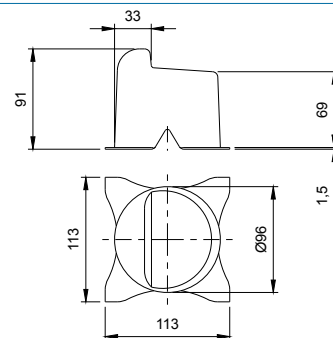


170

Ground central stop to be cemented
Butée centrale au sol à sceller
Auflaufschuh zum Ausbetonieren
Tope para cementar
Цементируемый стопор



CODE	ART.	Finishing	Box info	
			Pcs per pack	Kg
10701005 001	170	Galvanized / Zincato	25	8,5
10701105	170i	Stainless steel / Inox	5	1,8



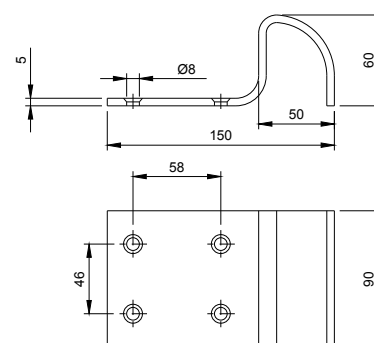
171

Ground central stop to be fixed
Butée centrale au sol à fixer
Auflaufschuh zum Anschrauben
Tope para fijar
Прикрепляемый стопор



CODE	ART.	Box info	
		Pcs per pack	Kg
10701205 001	171	10	8,2

Finishing: Galvanized



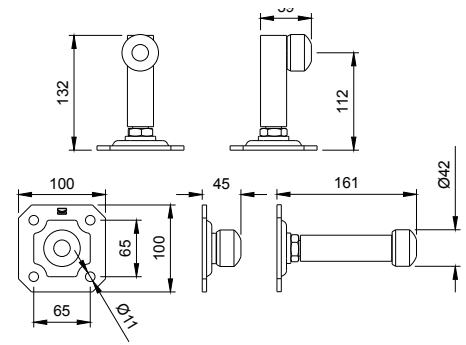
201

Runaway stop to be screwed
 Boutoir de fin de course avec base à visser
 Torendpuffer mit Befestigungsplatte zum Anschrauben
 Tope de final de carrera con base para fijar
 Стопор конца хода с прикрепляемым основанием



CODE	ART.	Box info	
		Pcs per pack	Kg
10701450 001	201	2	2.78

Finishing: Galvanized



RISING HINGES

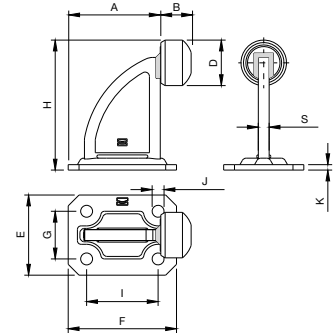
202

Runaway stop to be screwed
 Boutoir de fin de course avec base à visser
 Torendpuffer mit Befestigungsplatte zum Anschrauben
 Tope de final de carrera con base para fijar
 Стопор конца хода с прикрепляемым основанием



CODE	ART.	A	B	C	D	E	F	G	H	I	J	K	S	Box info	
														Pcs per pack	Kg
10701805 001	202-P	70	28	92,5	Ø37	60	80	40	102	50	Ø9	5	8	20	12
10701810 001	202-G	50	27	113,5	Ø42	47	100	44	118,5	66	Ø11	5	8	10	7.4

Finishing: Galvanized



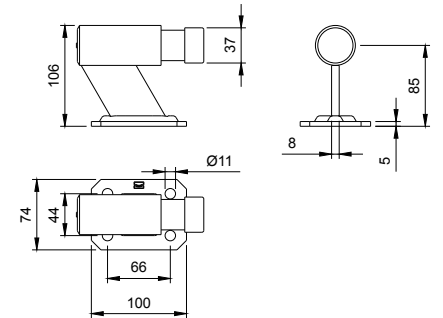
202F-A

Damped runaway stop to be screwed
 Boutoir de fin de course amorti avec base à visser
 Torendpuffer mit Platte zum Anschrauben
 Tope de final de carrera amortiguado con base para fijar
 Амортизированный стопор конца хода с прикрепляемым основанием



CODE	ART.	Box info	
		Pcs per pack	Kg
10704201 001	202F-A	4	5,6

Finishing: Galvanized



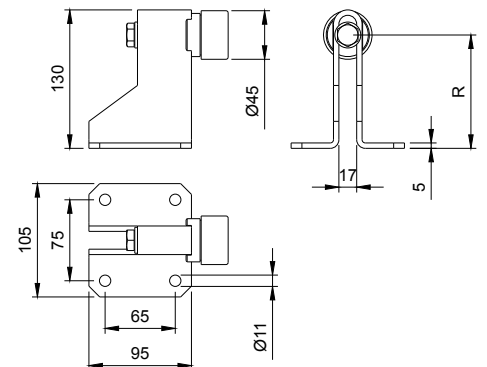
202F-C

Adjustable runaway stop to be screwed
 Boutoir de fin de course à visser réglable
 Verstellbarer Torendpuffer zum Anschrauben
 Tope de final de carrera regulable para fijar
 Прикрепляемый регулируемый стопор конца хода



CODE	ART.	R	Box info	
			Pcs per pack	Kg
10704401 001	202F-C	70-115	10	12.4

Finishing: Galvanized



Gate innovation made in Comunello

 **COMUNELLO GATE**

FRATELLI COMUNELLO S.P.A.

Via Cassola, 64 - C.P. 79

36027 Rosà, Vicenza, Italy

Tel. +39 0424 585111 Fax +39 0424 533417

info@comunello.it www.comunello.com