

LIWIN L30 230 Vac 24 Vdc

PRODUCT DATA SHEET

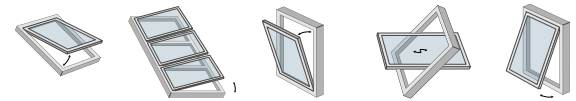
Electromechanical chain actuator for opening and closing inward and outward windows, sheds and skylights.



AVAILABLE COLOURS

- Black RAL 9005
- Grey RAL 7035
- White RAL 9010

OPENINGS



Electromechanical actuator model LIWIN L30 with articulated double linked chain with increased thickness. Both 230V and 24VDC versions available. Electronic stop for opening, current limitation stop for closing. Up to 4 different strokes adjustable by trimmer also when motor is powered off.

Can be connected in parallel.

It is possible to install two L30 in the same window by using the AF 960 control board.



TECHNICAL CHARACTERISTICS

ART.	L30 230V	L30 24V
Power supply	230Vac	24Vdc
Frequency	50 Hz	
Operation	S2(4min)	S2(4min)
Max. thrust	300 N	300 N
Speed	18 mm/s	18 mm/s
Protection degree (IP)	IP30	IP30
Double insulation	yes	low voltage
Max. absorption.	0,19 A	1 A
Power consumption	28 W	28 W
Working temperature	-5°C / +50°C	-5°C / +50°C
Stroke	200 – 250 – 300- 360 mm	200 – 250 – 300- 360 mm
End stop for closing	current limitation	current limitation
Soft Start/Soft Stop	yes / yes	yes / yes
Obstacle detection	yes	yes
Connected in parallel	yes (max 30 actuators)	yes (max 30 actuators)
Synchronization	no	no
Dimensions	390x34x56 mm	390x34x56 mm
Sound pressure	<70dB	<70dB

LIWIN L30 230 Vac 24 Vdc

PRODUCT DATA SHEET

COMPACT (34x56 mm)

The reduced dimensions allow installation even in small spaces.

STRONG

The robust chain with double mesh and increased thickness guarantees greater resistance in thrust and in traction.

RELIABLE

The actuator swings on support brackets to follow the window's movement.

ADJUSTABLE

Easily adjustable stroke by trimmer, even when the motor is powered off

SAFE

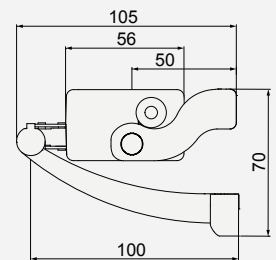
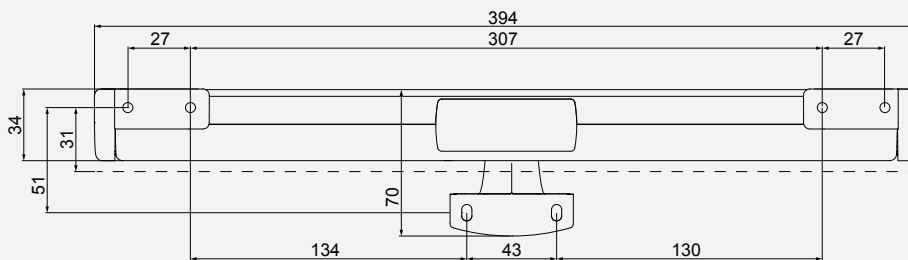
The slowdowns in opening and closing phases guarantee safety and precision of the stroke.

LIMIT STOPS

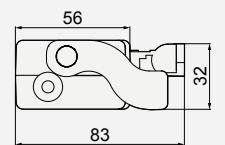
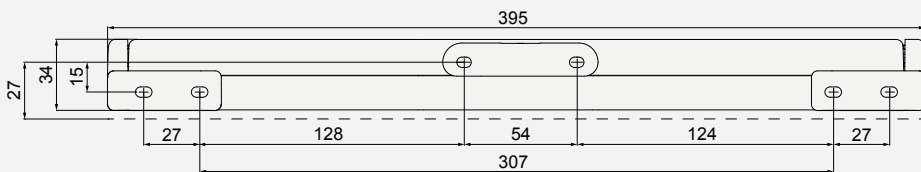
Self-learning of the closing end-stops by current absorption. This ensures a safe and constant closure over time.

Dimensions

Bottom hung inward opening window



Top hung outward opening window



LIWIN L30

Article	Product code	Colour
L30 230V	ML30 S1 36H 0B 00	■ Black RAL 9005
L30 230V	ML30 S1 36H 0G 00	■ Grey RAL 7035
L30 230V	ML30 S1 36H 0W 00	□ White RAL 9010
L30 24V	ML30 S1 36L 0B 00	■ Black RAL 9005
L30 24V	ML30 S1 36L 0G 00	■ Grey RAL 7035
L30 24V	ML30 S1 36L 0W 00	□ White RAL 9010

FIXING BRACKETS FOR OUTWARD WINDOWS



FIXING BRACKETS FOR INWARD WINDOWS



SUPPORT BRACKETS



Main Accessories

SUPPORT BRACKETS FOR DORMER WINDOWS



■ Black - ML 00 AS 06N 0W 00
■ Grey - ML 00 AS 06N 0G 00
□ White - ML 00 AS 06N 0B 00

SUPPORT BRACKETS HIGH VERSION



■ Black - ML 00 AS 04N 0B 00
■ Grey - ML 00 AS 04N 0G 00
□ White - ML 00 AS 04N 0W 00

SUPPORT BRACKETS SMALL VERSION



■ Black - ML 00 AS 08N 0B 00
■ Grey - ML 00 AS 08N 0G 00
□ White - ML 00 AS 08N 0W 00

CONTROL UNIT - 1 MOTOR OUTPUT WITH BUILT-IN RECEIVER (230 VAC)



MX00 AU 02H 0W 00 with receiver

CONTROL UNIT - 1 MOTOR OUTPUT WITHOUT BUILT-IN RECEIVER (230 VAC)



MX00 AU 03H 0W 00

R-CONTROL Remote control with 1 (R1) or 6 channels (R6)



Available in 6 colours

AF 960: TWIN Control Board (only 230 VAC actuators)



MP00 EO 03H 00 00

RAIN SENSOR



MX00 AR 01N 0G 00

RAIN/SUN SENSOR



MX00 AR 01N 0T 00

WIND SENSOR



MX00 AR 02N 0G 00

WIND/SUN SENSOR



MX00 AR 02N 0T 00